

JANTZEN AUDIO

ATiRi

Designed by Troels Gravesen



“The ATiRi construction features drivers from AudioTechnology and Viawave.

The 18H52 midbass comes with titanium voice coil former and display exceptional linearity in all of the midband and lower treble.

The Viawave GRT-145 sealed ribbon tweeter, features U-shaped polymer suspension between ribbon and magnet poles, thus, reduced air turbulence, increased sensitivity and reduced distortion.

An exceptional pair of drivers for this easy-to-build two-way stand-mount.”

Speaker Units (Drivers):

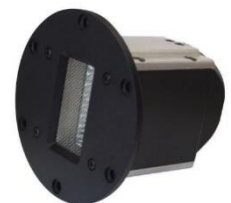
**Audio Technology
18H52-17-06-SDT
Woofers**
(comes with DIY kit)



**Audio Technology
PR23
Passive Radiator**
(comes with DIY kit)



**Viawave
GRT-145-4 (4Ω)
Sealed ribbon tweeters**
(comes with DIY kit)



Crossover component options (kit levels):

Level 1:

Inductors:

Air core coils



Resistors:

Superes resistors



Capacitors:

Tweeters: Amber Z-Caps



Midrange: Superior Z-Caps



Crossover component options (kit levels):

Level 2:

Inductors:

Air core coils



Resistors:

Superes resistors



Capacitors:

Tweeters: Alumen Z-Caps



Midrange: Superior Z-Caps



What else is included in the DIY kit?

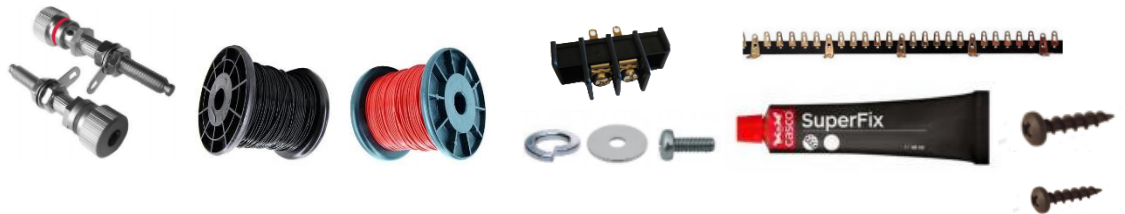
Damping Materials included in the DIY kit as standard:

Damping felt
Polyester damping cloth
Combed natural wool filler



Accessories included in the DIY kit as standard:

Binding post terminals
PFTE insulated silver infused cables for internal wiring
2-pole screw-in terminals
Mounting set for PR23 passive radiators
Solder tag strips
SuperFix component fastening glue
Round head wood screws



Pricelist

(Click here)

Optional accessories

(Click here)

Complete design article

(Click here)

Contact us to buy a DIY kit

(Click here)

General information:

- The prices mentioned in the pricelist are excluding shipping costs
- The “closed schematic” DIY kits can only be purchased directly from Jantzen Audio
- Crossover schematics & values for the “closed” DIY kits are not sold separately
- All crossover components must be purchased
- Drivers, Hypex, damping materials and accessories are optional (some exceptions)
- We do not offer pre-assembled crossovers

Customization:

- Only the capacitors can be upgraded (when applicable)
- We do not offer to downgrade any components to a lower grade than included in the existing kit version / levels

Cabinets:

- Cabinet materials are not included
- We do not offer readymade cabinets

Build instructions include:

- A printed instruction containing, the component values list, the crossover schematic, a crossover component placement drawing and the wiring chart