

JANTZEN AUDIO

Ellipticor A50 **mk II** – Passive version

Designed by Troels Gravesen

Note that final cabinets use slotted ports!



Click the buttons below to go to:

[Price List](#)

[Complete Design Article](#)

[Contact / Purchase Form](#)

JANTZEN AUDIO

Troels Gravesen's Introduction:

When Scan-Speak wanted to celebrate 50 years of speaker driver manufacturing, all sails were set to mark the event and the Ellipticor range of drivers were developed.

State of the art is an understatement, when it comes to the Ellipticor drivers and the Ellipticor-A50 loudspeaker takes advantage of the entire range, from the 15" bass driver to the D2404 tweeter and not least the unprecedented mid-dome D8404, covering some four octaves of the ever so important midrange.

In addition to this Jantzen Audio high-end crossover components ensures passage of the most delicate music details possible, with copper and aluminum foil capacitors for the critical points in crossover design.

IMPORTANT!

Please read our sales terms to read about how the DIY kits are delivered and other important information.

Click [HERE](#) to read sales terms

JANTZEN AUDIO

Drivers used in the construction:

2 x Scan-Speak Ellipticor 38WE/8582T00 (Woofers)



2 x Scan-Speak Ellipticor 21WE/8542T00 (Mid-woofers)



2 x Scan-Speak Ellipticor D8404/552000 (Mid-dome)



2 x Scan-Speak Ellipticor D2404/552000 (Tweeters)



JANTZEN AUDIO

Crossover components:

Coils:

C-Coils

Litz Wire Wax Coils

Air & Iron core wire coils



Tweeter capacitors:

Amber Z-Caps



Mid-range capacitors:

Alumen & Silver Z-Caps & Cross Caps



Lower mid-range & bass capacitors:

Cross Caps



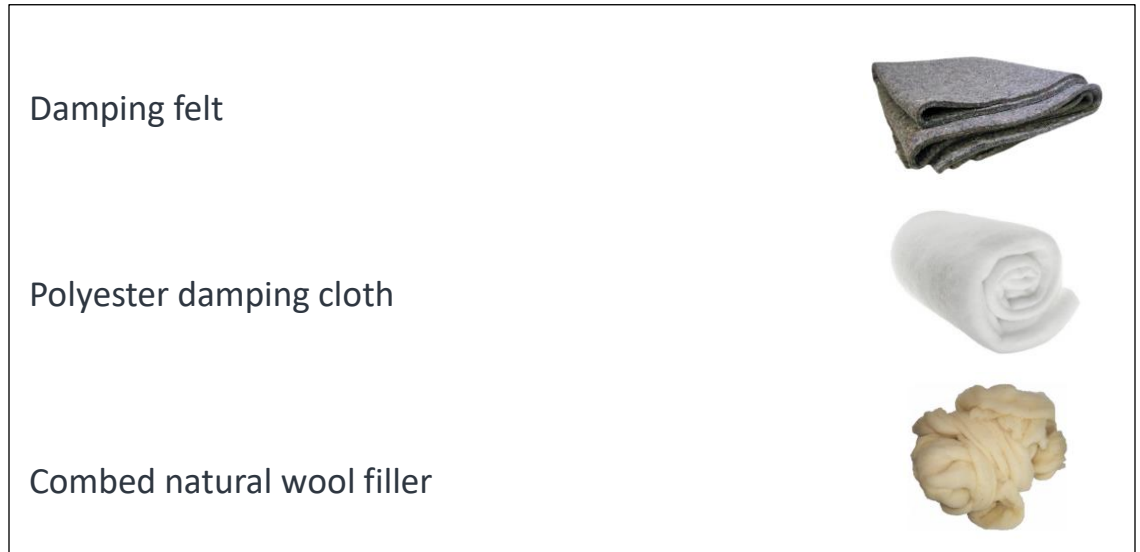
Resistors:

Superes (wire wound)

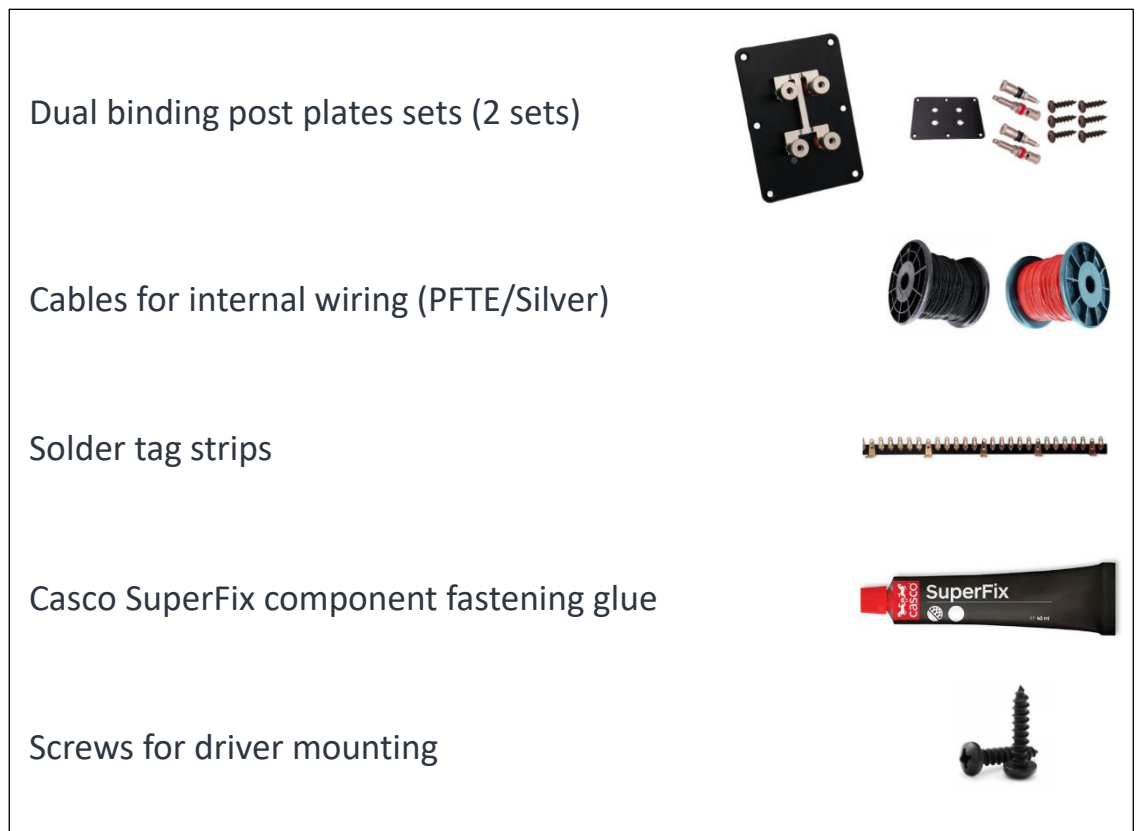


JANTZEN AUDIO

Damping materials included in the DIY kit:

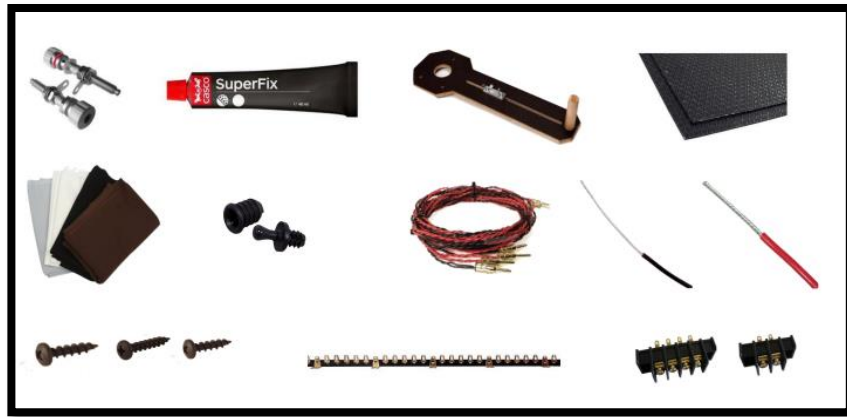


Accessories included in the DIY kit:



JANTZEN AUDIO

For general accessories click the box below



For SoundCare Super Spikes click the box below

