

## The Loudspeaker 2 (TL 2)

Designed by Troels Gravesen



*“The speaker kit to end all speaker building...*

*– if you have the space –*

*Here in a slightly more compact size, compared to “The Loudspeaker 1”.*

*Deep articulate bass from 18” bass driver, ultra transparent and dynamic midrange from 10” midrange driver, treble range as transparent and smooth as can be from state of the art compression drivers.”*

**Please note:**

**The Loudspeaker 2 can be built as a fully passive or semi-active construction**

# JANTZEN AUDIO

## Speaker Units (Drivers) & Hypex Plate Amps:

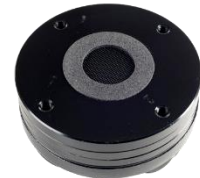
**BMS  
18N862 (8Ω)  
Woofers**  
**(Not included in DIY kit)**



**18 Sound  
10NMBA520 (8Ω)  
Midrange-driver**  
**(Not included in DIY kit)**



**18 Sound  
NSD1095N (8Ω)  
Compression driver**  
**(Not included in DIY kit)**



**18 Sound  
XT1086  
Horn**  
**(Not included in DIY kit)**



**Hypex (For Semi-active construction)  
FA501  
Fusion Plate Amp**  
**(Can be included in DIY kit)**



## Super tweeter options:

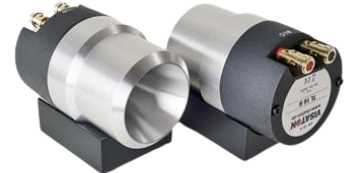
**Viawave  
GRT-145-4  
Ribbon tweeters**  
(Can be included in DIY kit)



**Fostex  
FT96H  
Tweeters**  
(Not included in DIY kit)



**Visaton  
TL16H  
Tweeters**  
(Not included in DIY kit)



**JBL  
2405H  
Tweeters**  
(Not included in DIY kit)



**JBL  
077 (2405) Alnico  
Tweeters**  
(Not included in DIY kit)



**Beyma  
CP21/F  
Tweeters**  
(Not included in DIY kit)



# JANTZEN AUDIO

## Passive version Crossover component options (kit levels):

### Level 1:

#### Inductors:

C-Coils  
Litz wire wax coils  
Air core & iron core wire coils



#### Resistors:

Superes resistors



#### Capacitors:

Super Tweeters: Amber Z-Caps



Tweeters (Horns): Amber Z-Caps



Midrange: Alumen Z-Caps



Other: Standard Z-Caps & Electrolytic caps



# JANTZEN AUDIO

## Passive version Crossover component options (kit levels):

### Level 2:

#### Inductors:

C-Coils  
Litz wire wax coils  
Air core & iron core wire coils



#### Resistors:

Superes resistors



#### Capacitors:

Super Tweeters: Alumen Z-Caps



Tweeters (Horns): Amber Z-Caps



Midrange: Superior Z-Caps



Other: Standard Z-Caps & Electrolytic caps



## Passive version Crossover component options (kit levels):

### Level 3:

#### Inductors:

C-Coils  
Litz wire wax coils  
Air core & iron core wire coils



#### Resistors:

Superes resistors



#### Capacitors:

Super Tweeters: Alumen Z-Caps



Tweeters (Horns): Alumen Z-Caps



Midrange: Superior Z-Caps



Other: Electrolytic caps



## Semi-active version Crossover component options (kit levels):

### Level 1:

#### Inductors:

Litz wire wax coils  
Air core wire coils



#### Resistors:

Superes resistors



#### Capacitors:

Super Tweeters: Amber Z-Caps



Tweeters (Horns): Amber Z-Caps



Midrange: Alumen Z-Caps



# JANTZEN AUDIO

## Semi-active version Crossover component options (kit levels):

### Level 2:

#### Inductors:

Litz wire wax coils  
Air core wire coils



#### Resistors:

Superes resistors



#### Capacitors:

Super Tweeters: Alumen Z-Caps



Tweeters (Horns): Amber Z-Caps



Midrange: Superior Z-Caps





# JANTZEN AUDIO

## Passive version Crossover component options (kit levels):

### Level 3:

#### Inductors:

Litz wire wax coils  
Air core wire coils



#### Resistors:

Superes resistors



#### Capacitors:

Super Tweeters: Alumen Z-Caps



Tweeters (Horns): Alumen Z-Caps



Midrange: Superior Z-Caps



## What else is included in the DIY kit?

### Damping Materials included in the DIY kit as standard:

Damping felt  
Polyester damping cloth  
Combed natural wool filler



### Accessories included in the DIY kit as standard:

Binding post terminals  
PFTF insulated silver infused cables for internal wiring  
Jantzen Supra cables for internal wiring  
Solder tag strips  
Screw-in terminals  
SuperFix component fastening glue  
Round head wood screws



**Pricelist**

*(Click here)*

**Optional accessories**

*(Click here)*

**Complete design article**

*(Click here)*

**Contact us to buy a DIY kit**

*(Click here)*

## **General information:**

- The prices mentioned in the pricelist are excluding shipping costs
- The “closed schematic” DIY kits can only be purchased directly from Jantzen Audio
- Crossover schematics & values for the “closed” DIY kits are not sold separately
- All crossover components must be purchased
- Drivers, Hypex, damping materials and accessories are optional (some exceptions)
- We do not offer pre-assembled crossovers

## **Customization:**

- Only the capacitors can be upgraded (when applicable)
- We do not offer to downgrade any components to a lower grade than included in the existing kit version / levels

## **Cabinets:**

- Cabinet materials are not included
- We do not offer readymade cabinets

## **Build instructions include:**

- A printed instruction containing, the component values list, the crossover schematic, a crossover component placement drawing and the wiring chart