

# JANTZEN AUDIO

## ATiRi

Designed by Troels Gravesen



*“The ATiRi construction features drivers from AudioTechnology and Viawave.*

*The 18H52 midbass comes with titanium voice coil former and display exceptional linearity in all of the midband and lower treble.*

*The Viawave GRT-145 sealed ribbon tweeter, features U-shaped polymer suspension between ribbon and magnet poles, thus, reduced air turbulence, increased sensitivity and reduced distortion.*

*An exceptional pair of drivers for this easy-to-build two-way stand-mount.”*

## Speaker Units (Drivers):

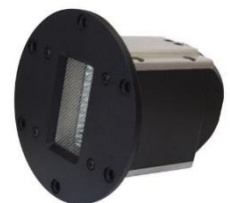
**Audio Technology  
18H52-17-06-SDT  
Woofers**  
(comes with DIY kit)



**Audio Technology  
PR23  
Passive Radiator**  
(comes with DIY kit)



**Viawave  
GRT-145-4 (4Ω)  
Sealed ribbon tweeters**  
(comes with DIY kit)



## Crossover component options (kit levels):

### Level 1:

#### Inductors:

Air core coils



#### Resistors:

Superes resistors



#### Capacitors:

Tweeters: Amber Z-Caps



Midrange: Superior Z-Caps



## Crossover component options (kit levels):

### Level 2:

#### Inductors:

Air core coils



#### Resistors:

Superes resistors



#### Capacitors:

Tweeters: Alumen Z-Caps



Midrange: Superior Z-Caps



## What else is included in the DIY kit?

### Damping Materials included in the DIY kit as standard:

Damping felt  
Polyester damping cloth  
Combed natural wool filler



### Accessories included in the DIY kit as standard:

Binding post terminals  
PFTE insulated silver infused cables for internal wiring  
2-pole screw-in terminals  
Mounting set for PR23 passive radiators  
Solder tag strips  
SuperFix component fastening glue  
Round head wood screws



**Pricelist**

*(Click here)*

**Optional accessories**

*(Click here)*

**Complete design article**

*(Click here)*

**Contact us to buy a DIY kit**

*(Click here)*

#### **General information:**

- The prices mentioned in the pricelist are excluding shipping costs
- The “closed schematic” DIY kits can only be purchased directly from Jantzen Audio
- Crossover schematics & values for the “closed” DIY kits are not sold separately
- All crossover components must be purchased
- Drivers, Hypex, damping materials and accessories are optional (some exceptions)
- We do not offer pre-assembled crossovers

#### **Customization:**

- Only the capacitors can be upgraded (when applicable)
- We do not offer to downgrade any components to a lower grade than included in the existing kit version / levels

#### **Cabinets:**

- Cabinet materials are not included
- We do not offer readymade cabinets

#### **Build instructions include:**

- A printed instruction containing, the component values list, the crossover schematic, a crossover component placement drawing and the wiring chart